

We Go To All the World

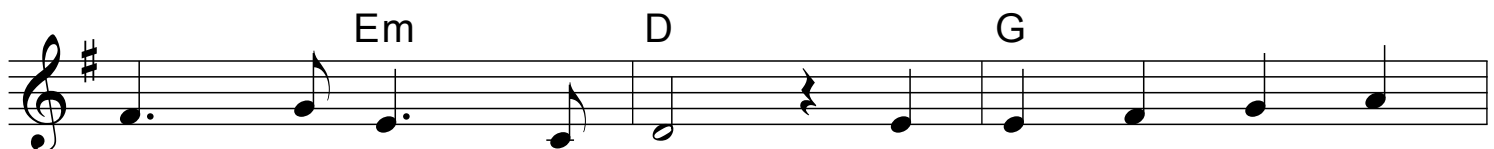


1 Fac - ing a task un - fi - nished that drives us to our
oth - er lords be - side___ Thee hold their un - hin - dered
bear the torch that flam - ing fell from the hands of
Fa - ther who sus - tained___ them O Spi - rit who in -

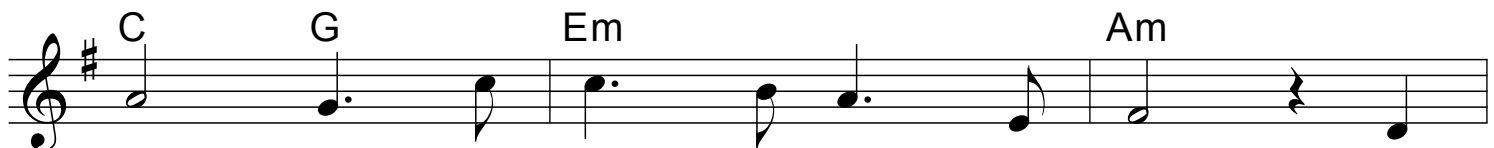
Guitar
CAPO 5



knees A need that un - di - min - ished re -
sway where forc - es that de - fied___ Thee de -
those who gave their lives pro - claim - ing that
spired Sa - vior whose love con - strained___ them to



bukes our sloth - ful ease We who re - joice to
fy Thee still to - day With none to heed their
Je - sus died and rose Ours is the same com -
toil with zeal un - tired From cow - ard - ice de -



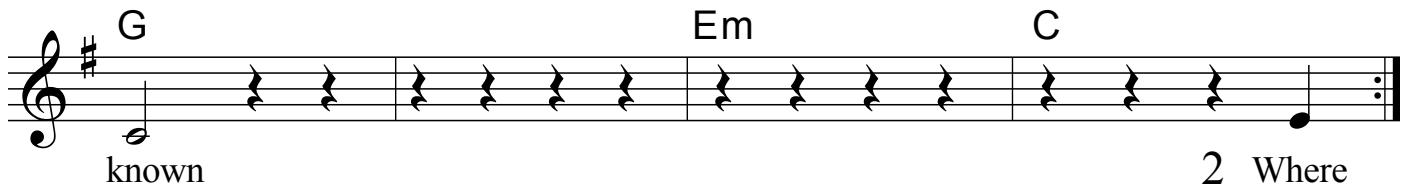
know Thee re - new be - fore Thy throne the
cry - ing for life and love and light un -
mis - sion the same glad mes - sage ours fired
fend us from leth - ar - gy a - wake Forth



sol - emn pledge we owe___ Thee to go and make Thee
num - bered souls are dy - ing and pass in - to the
by the same am - bi - tion to Thee we yeild our
on Thine er - rands send___ us to la - bor for Thy

1

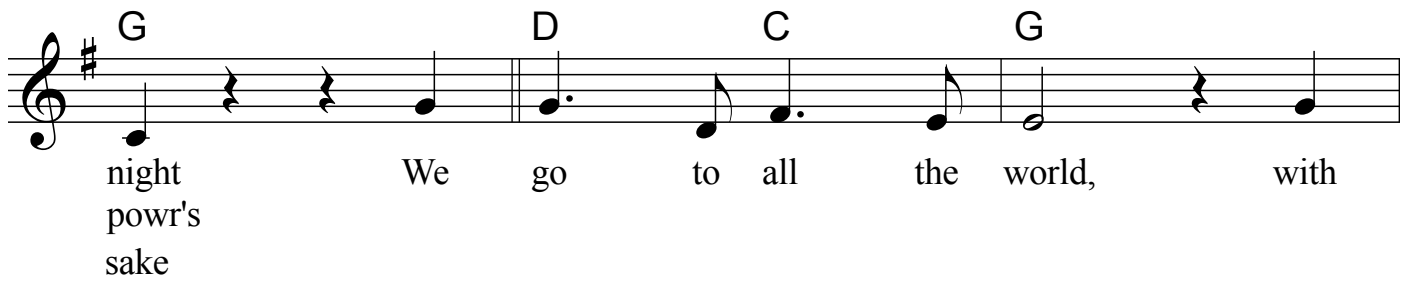
Instrumental 1



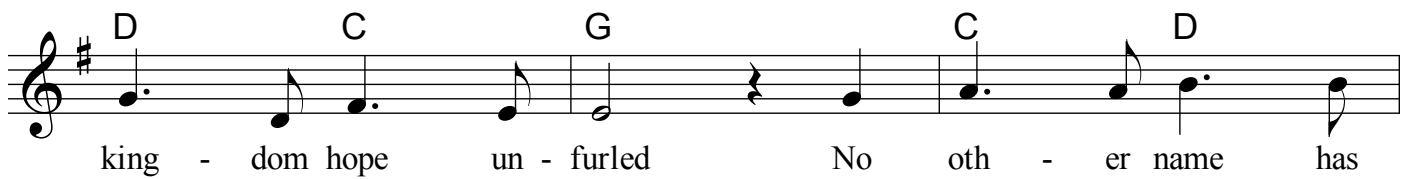
Musical notation for Instrumental 1 in G major. The staff shows a sequence of chords: G, Em, and C. The melody consists of quarter notes: G4, A4, B4, C5, B4, A4, G4. The word "known" is written below the first measure, and "2 Where" is written below the final measure.

2, 3, 4

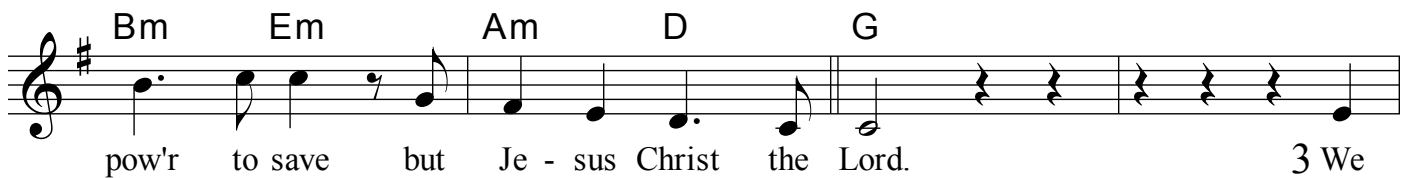
Chorus



Musical notation for the first line of the chorus. Chords: G, D, C, G. Melody: G4, A4, B4, C5, B4, A4, G4. Lyrics: "night", "powr's", "sake", "We", "go", "to", "all", "the", "world,", "with".



Musical notation for the second line of the chorus. Chords: D, C, G, C, D. Melody: G4, A4, B4, C5, B4, A4, G4. Lyrics: "king -", "dom", "hope", "un -", "furled", "No", "oth -", "er", "name", "has".



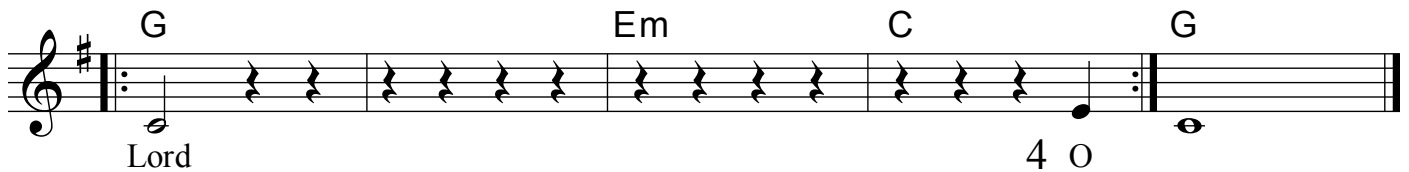
Musical notation for the third line of the chorus. Chords: Bm, Em, Am, D, G. Melody: G4, A4, B4, C5, B4, A4, G4. Lyrics: "pow'r", "to", "save", "but", "Je -", "sus", "Christ", "the", "Lord.", "3 We".

3rd time to Instrumental 2

4th time repeat chorus

Intrumental 2 / End

Instrumental 2



Musical notation for Instrumental 2 in G major. The staff shows a sequence of chords: G, Em, C, G. The melody consists of quarter notes: G4, A4, B4, C5, B4, A4, G4. The word "Lord" is written below the first measure, and "4 O" is written below the final measure. The word "END" is written above the final measure.